

# Parkheath

*Sold on Service*

**Parkhill Road NW3**  
**Asking Price £850,000**

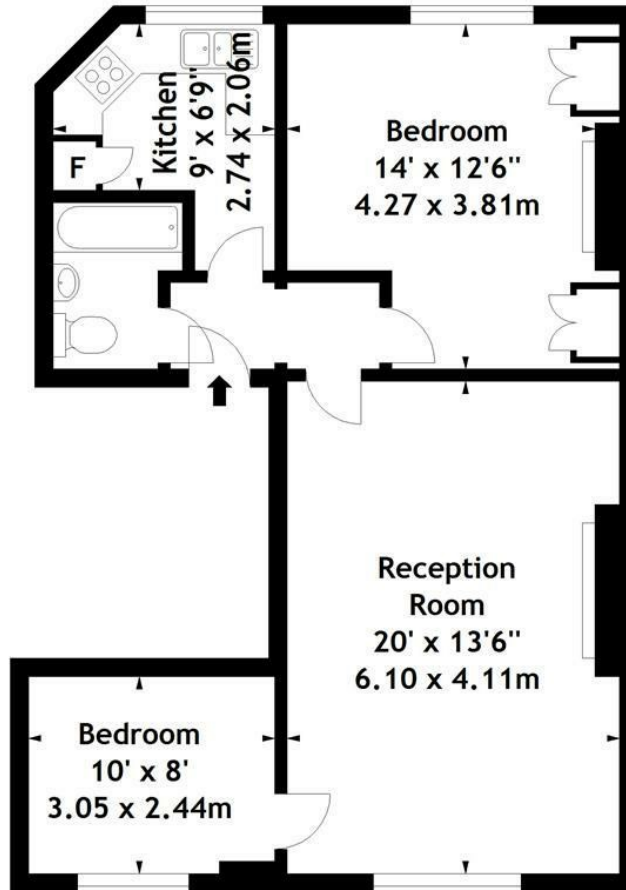
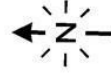


Immaculate 2 bedroom apartment  
Set in a classic period conversion  
20' reception with engineered flooring  
Carefully designed contemporary kitchen  
14' main bedroom with hand made wardrobes

10' second bedroom  
Entire 1st floor - close to 700 sq ft  
Excellent decorative order  
999 years from 1981  
Close to Belsize Park and Hampstead Heath

Belsize Park Office 020 7431 3104

Parkhill Road, NW3  
Approx. Gross Internal Area  
679 Sq Ft - 63.08 Sq M



### First Floor

Measured in accordance with RICS guidelines. Every attempt is made to ensure accuracy, however all measurements are approximate. This floor plan is for illustrative purposes only and is not to scale.

© Datography Ltd 2014

Photographs \* Floorplans \* Virtual Tours  
Tel: 0845 643 4401 [www.datography.com](http://www.datography.com)

The particulars do not constitute part of an offer or contract. The particulars, including text, photographs and plans, are for the guidance only of prospective purchasers/tenants and must not be relied upon as statements of fact. The descriptions provided therein represent the opinion of the author and whilst given in good faith should not be construed as statements of fact. Nothing in these particulars shall be deemed a statement that the property is in good condition or otherwise or that any services or facilities are in good working order. All measurements are approximate